

## REETRAY 30

The REETRAY 30 is a mobile semi-automatic tray sealing machine with vacuum and gas flushing functions. It is characterized by a large sealing area, compact footprint, and perimeter film cutting. Suitable for use with trays made of different materials (PP, CPET, APET, paper-based, and others) for vacuum or MAP sealing. It covers a wide range of tray-sealing applications such as fresh meat & fish, fresh produce, ready meals, nuts, cheese, dairy products, bakery & pastry, etc.

It is equipped with the Active Film Tensioning System (AFTS), specially developed by Reepack, which creates flawless skin/proskin packs without unattractive wrinkles, offering flexibility to package products of varying heights.



REENEXT SOFTWARE



SILENT



USER-FRIENDLY



STAINLESS STEEL



ECO LINE



SATINARY DESIGN

Technical Specifications	Reetray 30
Overall Machine Dimensions	710 x 1080 x h 1600 mm
Weight	215 kg
Maximum Tray Dimensions	430 x 305 mm
Maximum tray depth	95 (προαιρετικά-150) mm
Maximum film roll diameter	300 mm
Maximum film width	470 mm
Film roll mandrel diameter	70 - 76 mm
Vacuum pump	100 m <sup>3</sup> /h
Power supply	3 / N / PE 400V AC - 50 Hz
Power	Max 4,9 kW
Machine cycles	Up to 5 cycles/min*
Κατανάλωση αέρα	6 bar - 7 NI / c

Optional Equipment	Reetray 30
Vacuum chamber height 150mm	●
Photocell for printed film	●
Tray lifting system	Standard
Filter for liquids and powders	●
Silent air compressor	●

\*The above specifications refer to the basic configuration of the machines. Depending on the product and the packaging materials, they may vary.

## General Features:

- Sturdy, fully stainless-steel construction, ASTM 304/316 grade
- Independent, wheeled version for easy movement
- High-hygiene design
- Accessible upper vacuum chamber with interchangeable head
- Stainless-steel guides for tray inserts in the lower chamber
- Built-in Busch vacuum pump, 100 m<sup>3</sup>/h
- PLC with display and touch controls, enabling full MAP parameter and sealing time adjustments
- Programmable and storable packaging parameters
- Pneumatic systems by Metal Work, Festo, and SMC
- High-pressure piston sealing
- High-precision digital vacuum and gas gauges
- Temperature controller
- Mold with perimeter film cutting around the tray
- Easy-open tray configuration
- Automatic film scrap rewinding
- Active Film Tensioning System (AFTS)

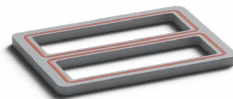
## Maximum Trays Dimensions per Configuration:

**FORMAT 1.1**



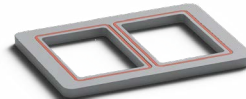
Max 430 x 305 mm (M.A.P. & SKIN)  
Max H 95 mm

**FORMAT 1.2**



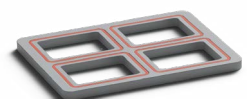
Max 430 x 142 mm (M.A.P. & SKIN)  
Max H 95 mm

**FORMAT 2.1**



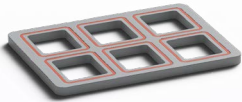
Max 205 x 305 mm (M.A.P. & SKIN)  
Max H 95 mm

**FORMAT 2.2**



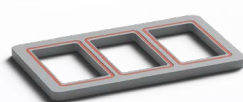
Max 205 x 142 mm (only M.A.P)  
Max H 95 mm

**FORMAT 2.3**



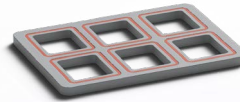
Max 205 x 95 mm (only M.A.P)  
Max H 95 mm

**FORMAT 3.1**



Max 130 x 305 mm (M.A.P. & SKIN)  
Max H 95 mm

**FORMAT 3.2**



Max 142 x 130 mm (only M.A.P)  
Max H 95 mm

**FORMAT 4.1**



Max 305 x 95 mm (only M.A.P)  
Max H 95 mm